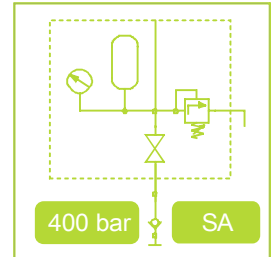


Advantages:

- ✓ Integrated safety elements
- ✓ Manifold mounting
- ✓ O-Ring and thread connection
- ✓ Disconnection while keeping the system pressure
- ✓ Easy coupling



Function

Recommendations for use:

The coupling unit is equipped with various connectivity options. It can be attached via O-ring connector on the bottom or at the back with G1 / 4 or O-ring. All sealing and closure elements are included.

As pressure medium we recommend hydraulic oil acc. DIN 51524 (HL, HLP).

Workflow for tensioning of a device:

- Coupling-manually
- Opening of the ball valve
- Pressure generation until all clamping elements are excited and the required system pressure is reached.
- Closure of the ball valve
- Stop pressurizing
- Uncouple manually
- Releasing device for processing

If the ball valve is opened while pressurizing in uncoupled state, nothing happens, but then the pressure has to be broken down between the ball valve and quick coupling before the next coupling. This is done by loosening the quick coupling.

Description:

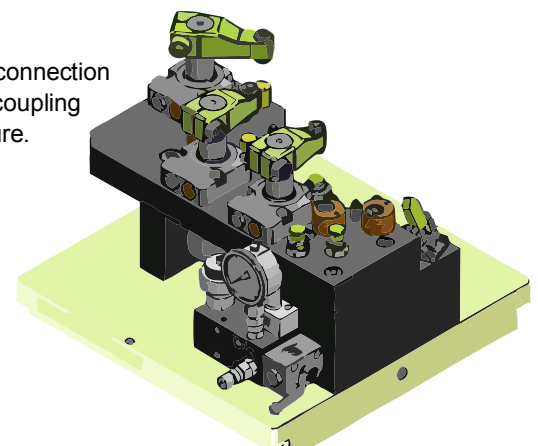
The coupling unit is used when the fixture is manually separated from the pressure generator, for example in flexible manufacturing systems or by using only one pressure generator for a plurality of clamping devices.

This unit has to be operated exclusively single-acting.

The necessary security elements are already built in. This means: You must not provide accumulators, safety valves, pressure gauges coupling elements or more in your fixtures.

Technical Data	Unit	Value
Nominal Diameter	mm	5
Pretension of accumulator	bar	100
Pressure area	bar	100-400
Safety valve setting	bar	425
Coupling connection	Ermeto	G1/4
Weight	kg	3,8
Buffer oil volume	ccm	9,75
Max. working temperature	°C	80
Part number		IMCU-001

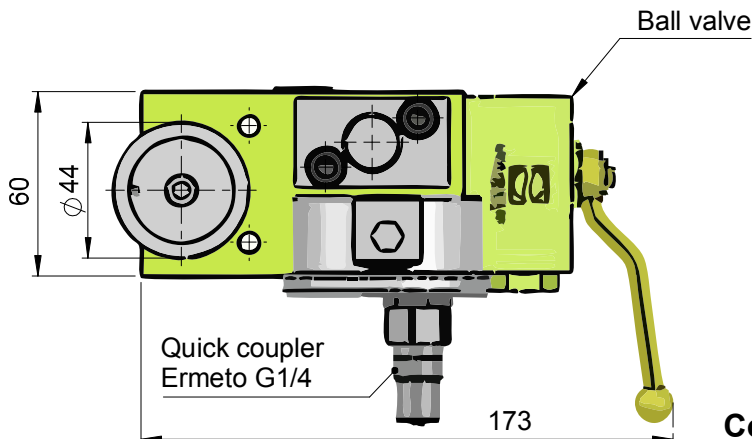
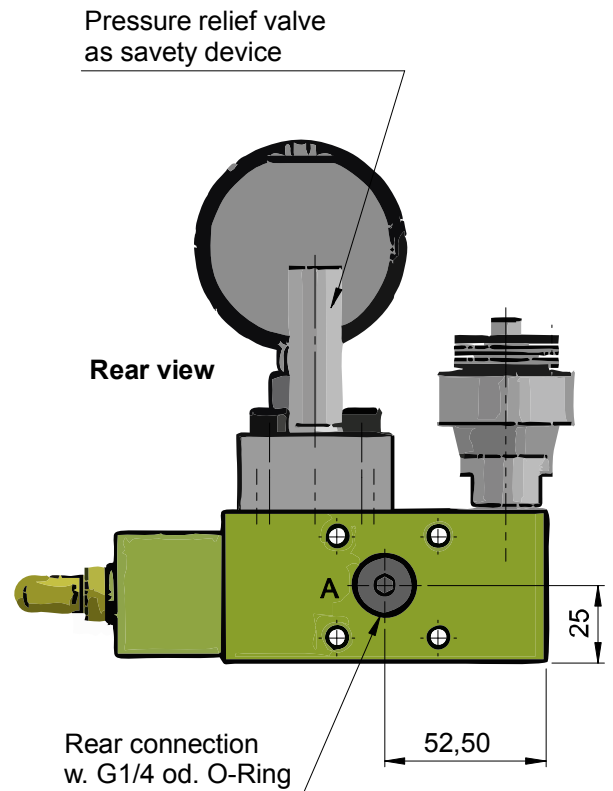
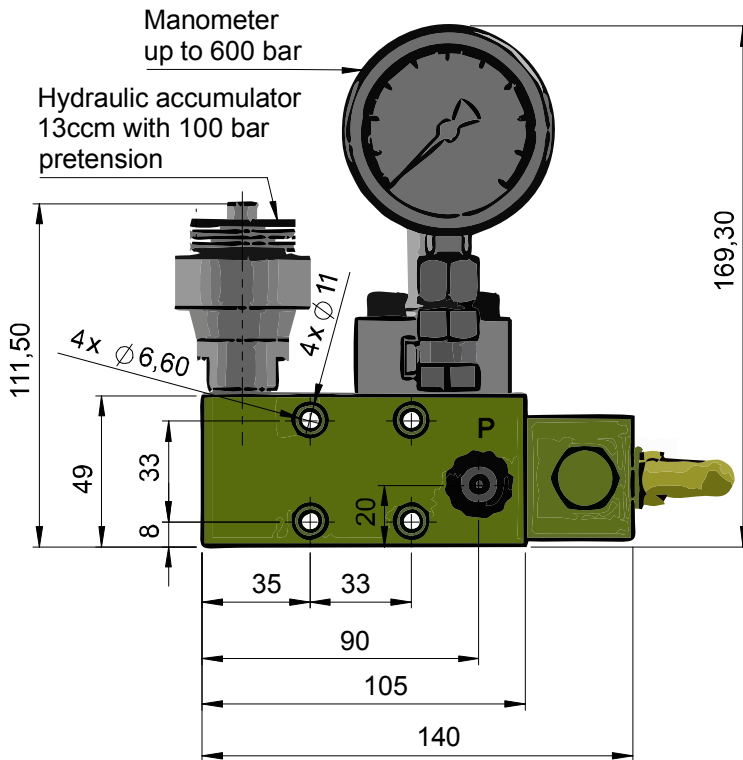
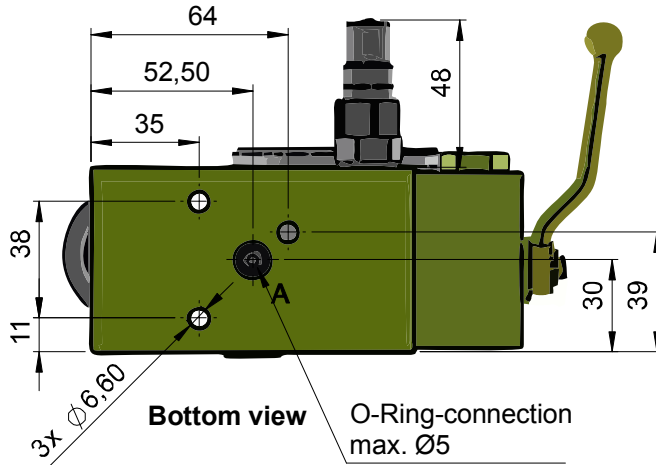
Example for connection of a manual coupling unit on a fixture.



Contact

iNOSOL GmbH
Frankfurter Str. 18
35315 Homberg/Ohm (Germany)

web: www.inosol.solutions
email: info@inosol.solutions
tel.: (+49) 6633 / 368 95 25



Special solutions on request!

Contact

iNOSOL GmbH
Frankfurter Str. 18
35315 Homberg/Ohm (Germany)

web: www.inosol.solutions
email: info@inosol.solutions
tel.: (+49) 6633 / 368 95 25