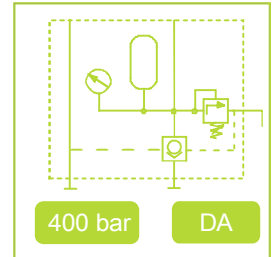


Advantages:

- ✓ Integrated safety elements
- ✓ Manifold mounting
- ✓ O-Ring and thread connection
- ✓ Disconnection while keeping the system pressure
- ✓ Easy coupling



Function

Recommendations for use:

The coupling unit is equipped with various connectivity options. It can be attached via O-ring connector on the bottom or at the back with G1 / 4 or O-ring. All sealing and closure elements are included.

As pressure medium we recommend hydraulic oil acc. DIN 51524 (HL, HLP).

Workflow for tensioning of a device:

- Coupling-manually at port „A+B“
- Pressure generation at „A“ until all clamping elements are excited and the required system pressure is reached.
- Stop pressurizing
- Uncouple manually

Unclamping

- Coupling-manually at port „A+B“
- Pressure generation at „B“ until all clamping elements are retracted.
- With pressurizing at „B“ the double check valve is released and the reflow in „A“-port is effected.
- Stop pressurizing.

Description:

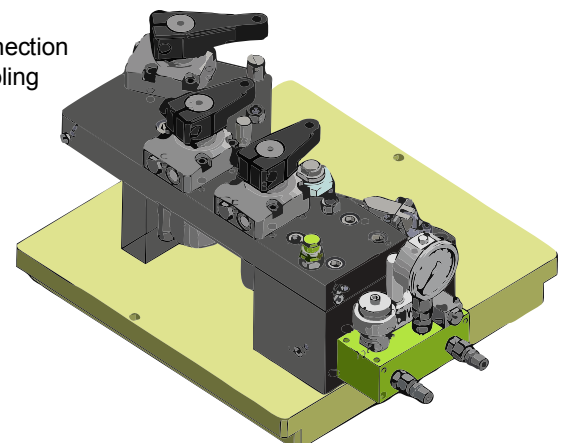
The coupling unit is used when the fixture is manually separated from the pressure generator, for example in flexible manufacturing systems or by using only one pressure generator for a plurality of clamping devices.

This unit has to be operated exclusively double-acting.

The necessary security element are already built in. This means: You must not provide accumulators, safety valves, pressure gauges coupling elements or more in your fixtures.

Technical Data	Unit	Value
Nominal Diameter	mm	5
Pretension of accumulator	bar	100
Pressure area	bar	100-400
Safety valve setting	bar	425
Coupling connection	Ermeto	G1/4
Weight	kg	3,8
Buffer oil volume	ccm	9,75
Max. working temperature	°C	80
Part number		IMCU-002

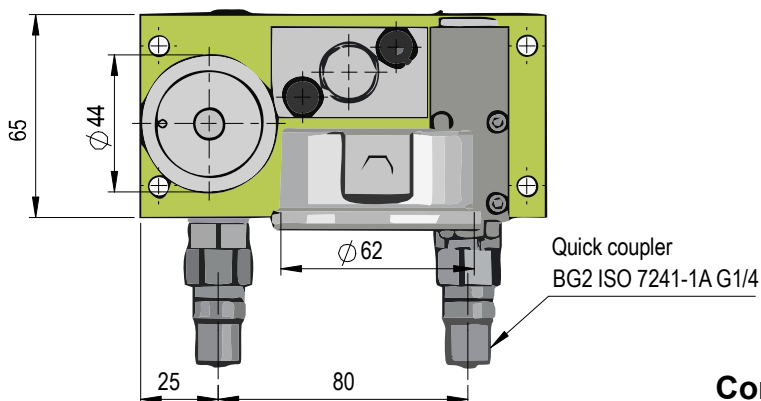
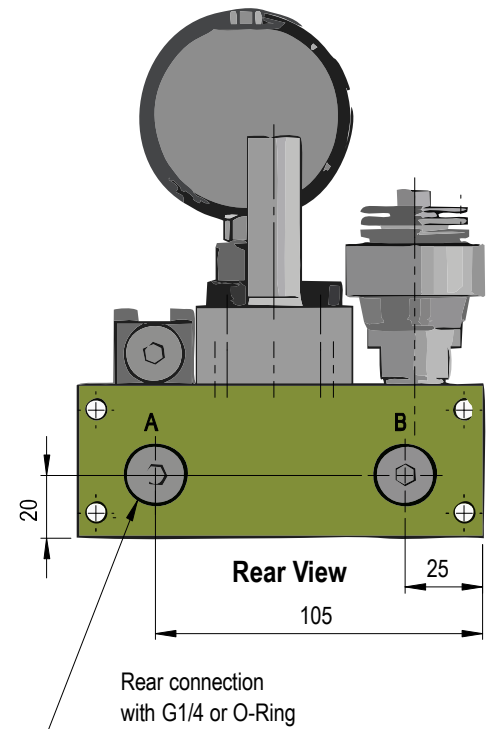
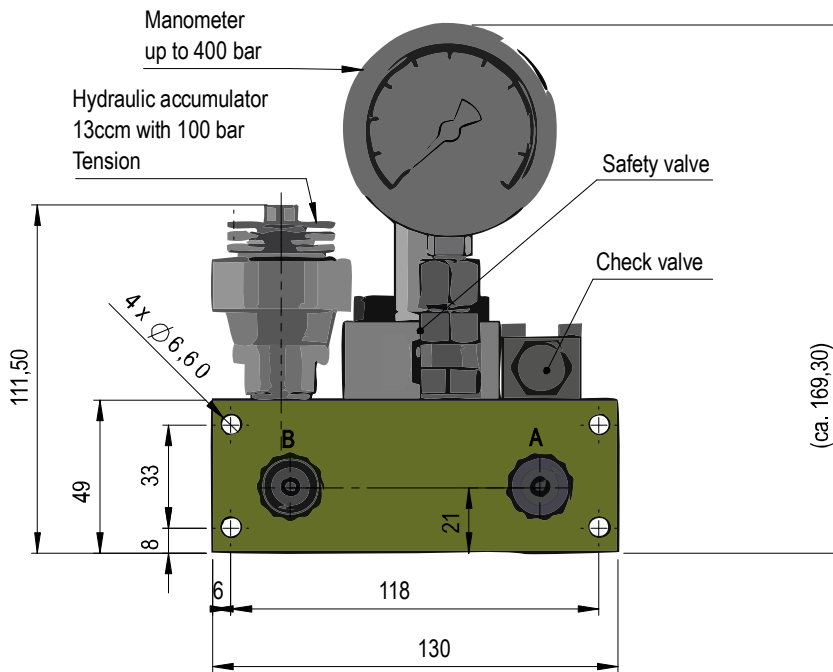
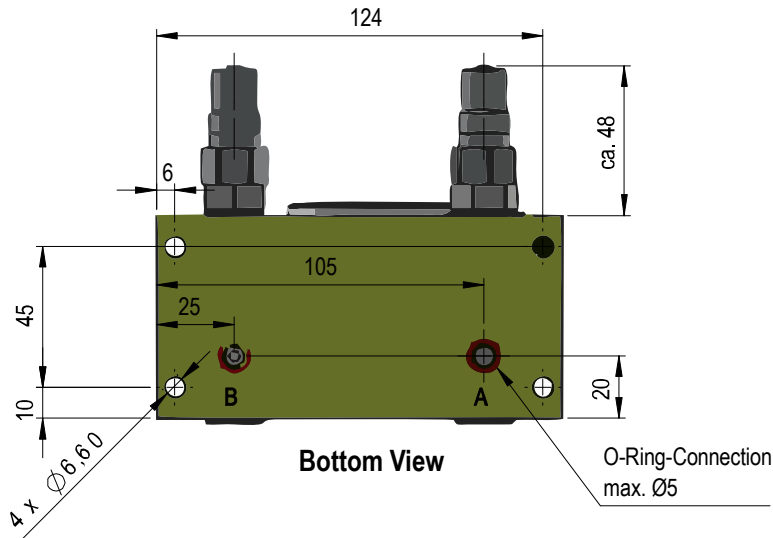
Example for connection of a manual coupling unit on a fixture.



Contact

iNOSOL GmbH
Frankfurter Str. 18
35315 Homberg/Ohm (Germany)

web: www.inosol.solutions
email: info@inosol.solutions
tel.: (+49) 6633 / 368 95 25



Special solutions on request!

Contact

iNOSOL GmbH
Frankfurter Str. 18
35315 Homberg/Ohm (Germany)

web: www.inosol.solutions
email: info@inosol.solutions
tel.: (+49) 6633 / 368 95 25