



Advantages:

- ✓ Independent of the flow direction useable
- ✓ Very good filtering
- ✓ Pipe mounting
- ✓ Filter-insert exchangeable
- ✓ Low weight because of aluminium housing

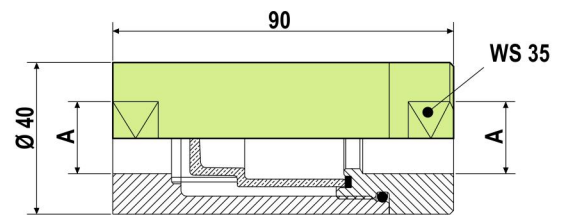
Description

In order to ensure the operational reliability of hydraulic systems and to protect the components against wear, it is strongly recommended that the pressure media is filtered.

The complexity of the hydraulic equipment makes not a difference. Even simple hydraulic systems can be contaminated by unacceptable influences in the hydraulic medium.

Usually hydraulic filters are integrated in the return line of the system. When using pressure intensifiers or controlled rotary joints/units, an installation in the flow pipe can be very useful also.

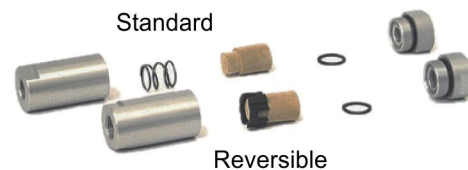
If these filters are used at pressures less than 15 bar, a coarser filtering as 25 microns is recommended.



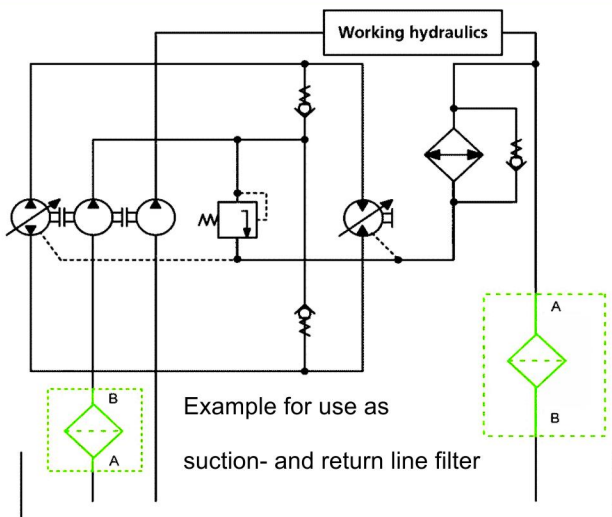
Part number	A	Filtering (µm)
IIF-001	G1/4	10
IIF-002	G1/4	25
IIF-003	G3/8	10
IIF-004	G3/8	25
IIF-005	G1/2	10
IIF-006	G1/2	25

Applications

- The use of in-line filters protects the entire hydraulic circuit.
- When replacing or re-installation of a pressure intensifier it is always advisable to install a filter also.
- Inosol uses only "reversible" type of filter, because they are independent of the direction of flow.



Technical Data



Housing:	Aluminium
O-Rings:	NBR 70
Media:	Hydraulic oils and water glycol
Filtrirring:	Sinter bronce 10 und 25 µm
Max. pressure:	350 bar
Min. pressure:	15 bar
Working temperature:	-10 bis 80°C

Contact

iNOSOL GmbH
Frankfurter Str. 18
35315 Homburg/Ohm (Germany)

web: www.inosol.solutions
email: info@inosol.solutions
tel.: (+49) 6633 / 368 95 25