



Advantages:

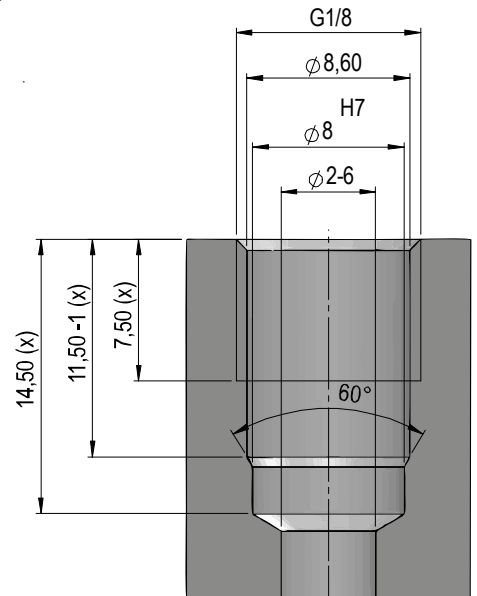
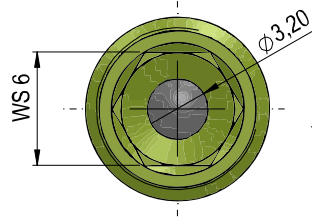
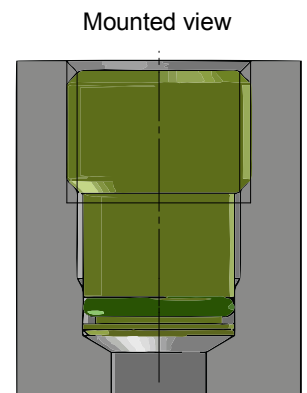
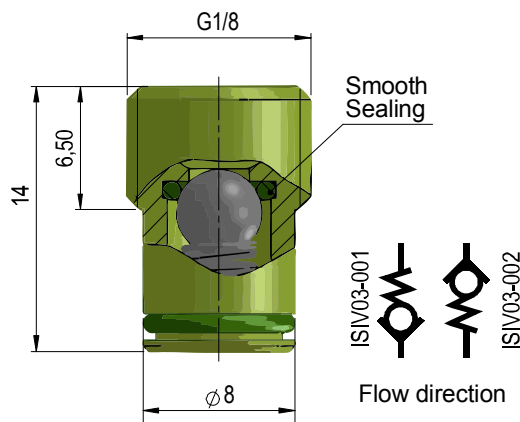
- ✓ Suitable for high pressure areas
- ✓ Dismountable and reusable
- ✓ Suitable for high temperatures
- ✓ Simple mounting hole
- ✓ Also usable for air and other gases
- ✓ Can be used as filling valve



Details

Characteristics

Flow against installation direct.	ISIV03-001
Flow in installation direction	ISIV03-002
Max. working pressure	350 bar
Cracking pressure	4,2 bar
Volume flow, hydraulic	1-25 l/min
Volume flow, pneumatic	10-90 l/min
Thread	G1/8
Sealing	FKM
Material	Stainless steel
Working temperature	-40° to 220° C
Nominal diameter	3
Torque	8 Nm



The marked with (x) dimensions refer to the minimum installation depth.

Notes

This valve is a spring loaded ball non-return valve, which is designed with soft sealing inside and outside.

To ensure absolute freedom from leakage, a spring was installed that causes a relatively high opening pressure and high flow pressure losses.

The ball can also be pushed open and the valve could also be used as a filling valve for gases.

In systems where the pressure should not exceed 3-4 bar, the valve can be used as a safety valve.

The valve can be used for air, gas, water and oil.

Contact

iNOSOL GmbH
Frankfurter Str. 18
35315 Homberg/Ohm (Germany)

web: www.inosol.solutions
email: info@inosol.solutions
tel.: (+49) 6633 / 368 95 25